

Interface Specification

FBS-14789

**Cicero Integration to Norwegian Person
Registry**

Table of Contents

1 Introduction 3

1.1 References..... 3

2 Supported services 3

3 Interfaces 3

3.1 FRONT 3

3.1.1 Rest endpoints used..... 3

3.1.2 Authentication 4

3.1.3 Blocking of loaners..... 4

3.1.4 Loaner addresses..... 5

Interface Specification

Project: \$14789 - FBS

Revision: \$Revision: 4.0\$ \$Latest major rev. date: 04 Jun 2024 13:57\$

Document: \$SSE/14789/IFS/0026

Copyright (c) 2024 by Systematic Group. It shall not be copied, reproduced, disclosed or otherwise made available to third party without previous consent from Systematic Group

1 Introduction

This document describes how Cicero interacts with person registry services in Norway.

The target group for this document are persons involved in the configuration of Cicero and third party systems that would like to understand the technical details of how Cicero interacts with the person registry services in Norway.

1.1 References

Reference	Title	Link
[FRONT]	FRONT Service Documentation	Yaml: https://gatekeeper.data.oslo.systems/api/api-catalog/apis/113/spec

2 Supported services

Cicero supports integration with the following person registry services in Norway:

Service	Description
FRONT	This service provides information about a loaner, only used in Oslo

3 Interfaces

This section describes how Cicero integrates with the supported services.

3.1 FRONT

The FRONT service is called to get updated information about a loaner or guardian when requested by a user in Cicero.

It provides a rest API to be called.

3.1.1 Rest endpoints used

This section lists the endpoints we're using from the FRONT API

The server endpoint can be configured in System configurations in the application.

Path	Description
/customers/persons/person	<p>Returns person information for a person identifier The person Identifier can be :</p> <ul style="list-style-type: none"> National identity number : https://www.skatteetaten.no/en/person/foreign/norwegian-identification-number/national-identity-number/ D-number : https://www.skatteetaten.no/en/person/foreign/norwegian-identification-number/d-number/ DUF-number: https://www.udi.no/en/word-definitions/duf-number/

3.1.2 Authentication

Authentication is done using an api key, passed to the call as a header parameter (x-api-key).

The api key can be configured in System configurations in the application.

3.1.3 Blocking of loaners

When importing loaner data from FRONT, loaners with the following status codes will be blocked with the EXTENDED_EXCLUSION blocking reason:

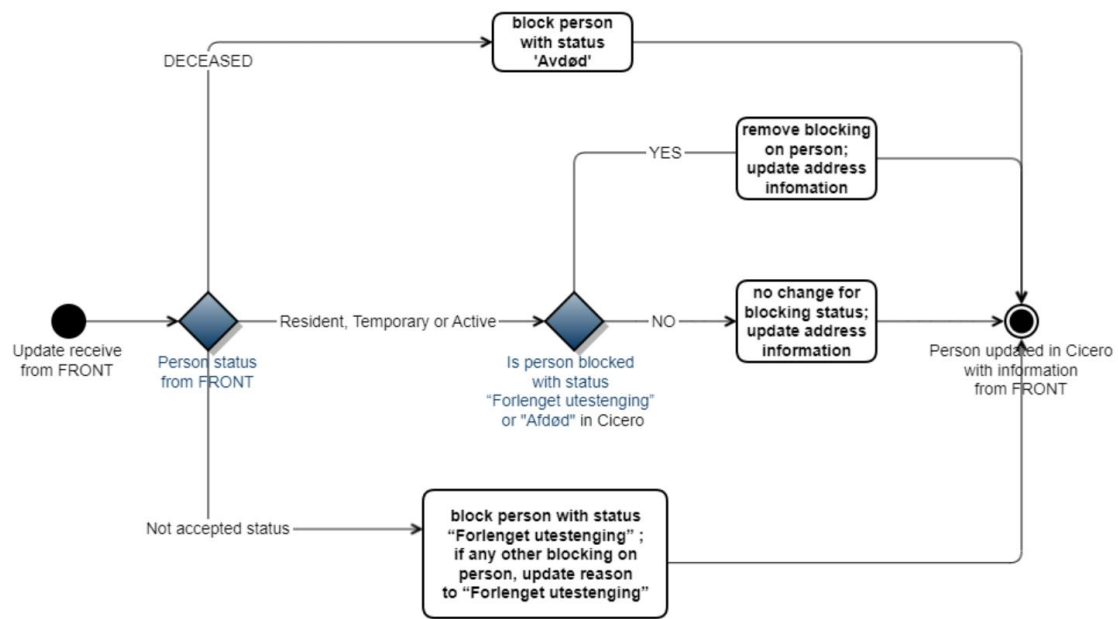
- NOT_RESIDENT
- EMIGRATED
- DISAPPEARED
- SOCIAL_SECURITY_NUMBER_EXPIRED
- BIRTH_REGISTERED
- INACTIVE
- EMIGRATED_DEPRECATED
- ACCESS_ANNULLED
- UNREGISTERED
- ANONYMIZED

Loaners with status code DECEASED will be blocked with the DECEASED blocking reason.

Cicero removes a block on a loaner if the block in Cicero has one of the blocking reasons EXTENDED_EXCLUSION or DECEASED and if loaner information from FRONT has one of the status codes:

- RESIDENT
- ACTIVE
- TEMPORARY

See below diagram for handling the loaner blocking status when importing loaner data from FRONT:



3.1.4 Loaner addresses

When importing loaners from FRONT, the address with the type PERSON_ADDRESS is used. If such an address does not exist, the address with the type MAILING_ADDRESS is used.

Cicero always updates address information on the loaner when synchronizing with FRONT, unless the status in FRONT is DECEASED.

SYSTEMATIC

Denmark - HQ
Aarhus
Copenhagen

Australia
Canberra
Brisbane

New Zealand
Wellington

United Arab Emirates
Abu Dhabi

Canada
Gatineau

Romania
Bucharest

United Kingdom
Farnborough

Finland
Tampere

Sweden
Stockholm

United States of America
Centreville, VA

Germany
Cologne

To find more specific office details please scan the QR code below



www.systematic.com